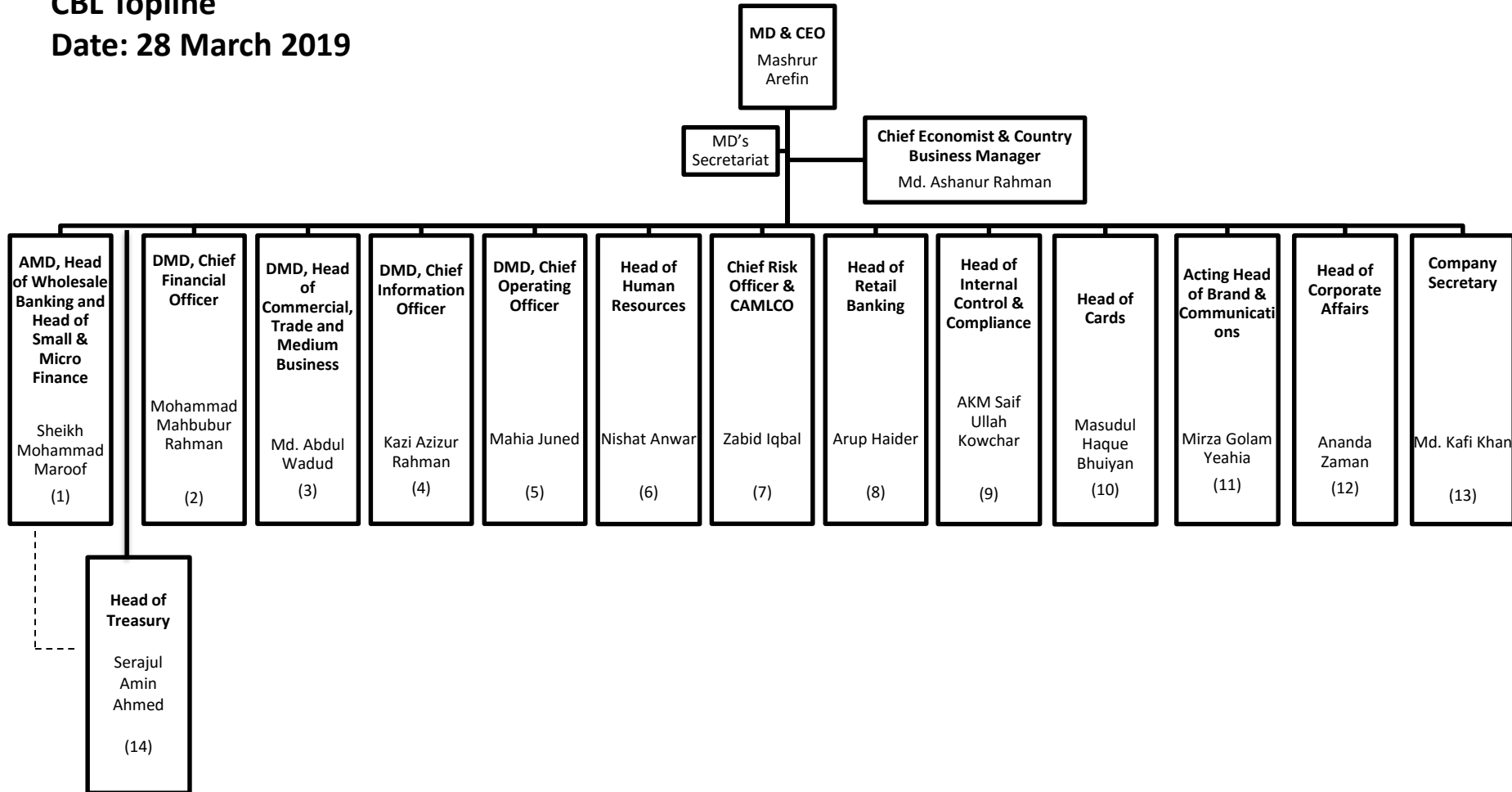


# Annexure- 1

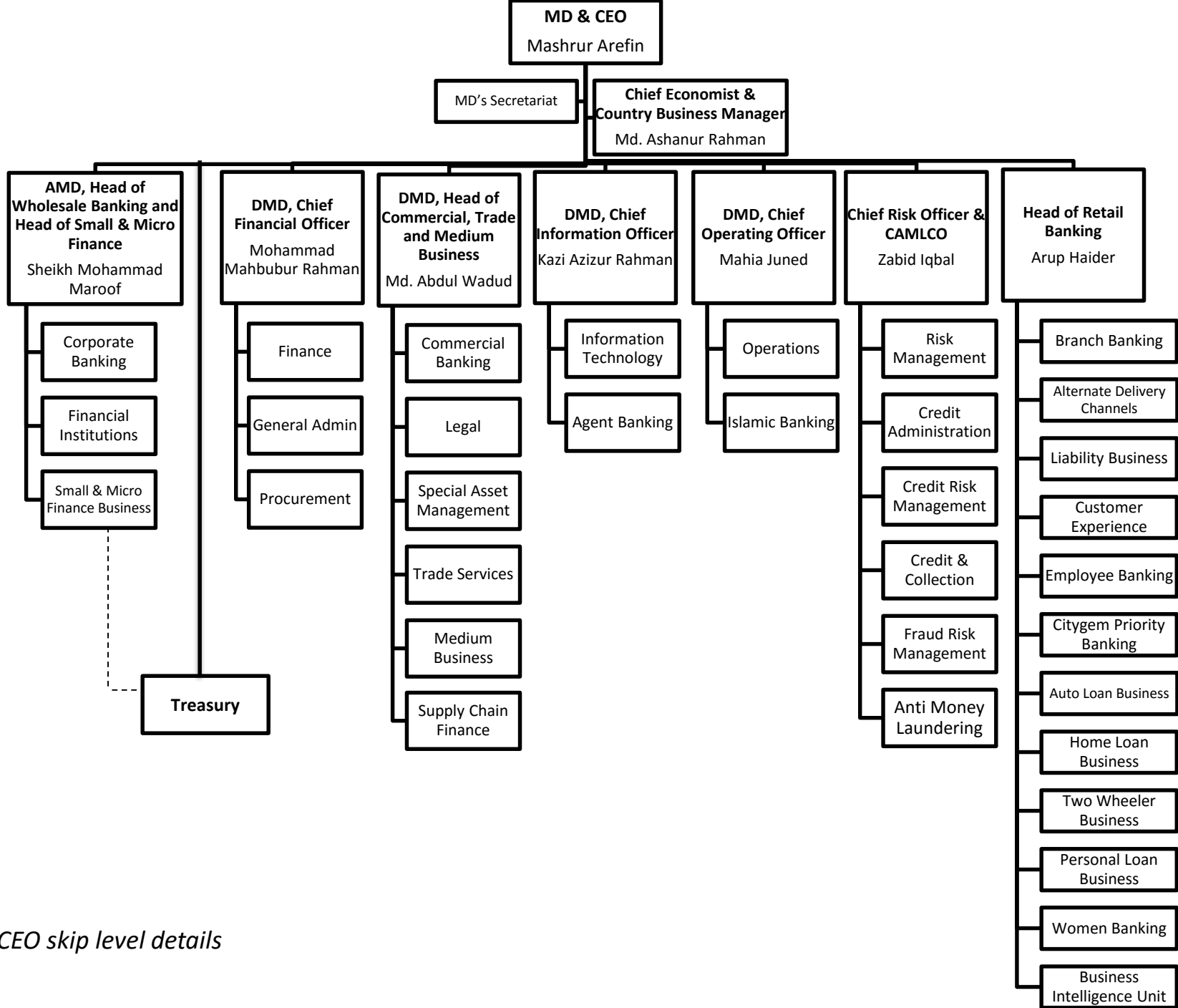
## CBL Topline

Date: 28 March 2019



### Note:

- (7) Chief Risk Officer will directly report to Board Risk Management (BRMC) and with a dotted reporting to MD & CEO. He will also perform as Head of Risk Management Division.
- (9) Head of ICCD will directly report to MD & CEO, However Head of Audit although being a part of ICC administratively, shall report directly to Audit Committee of the Board of Directors (ACB)



MD & CEO skip level details