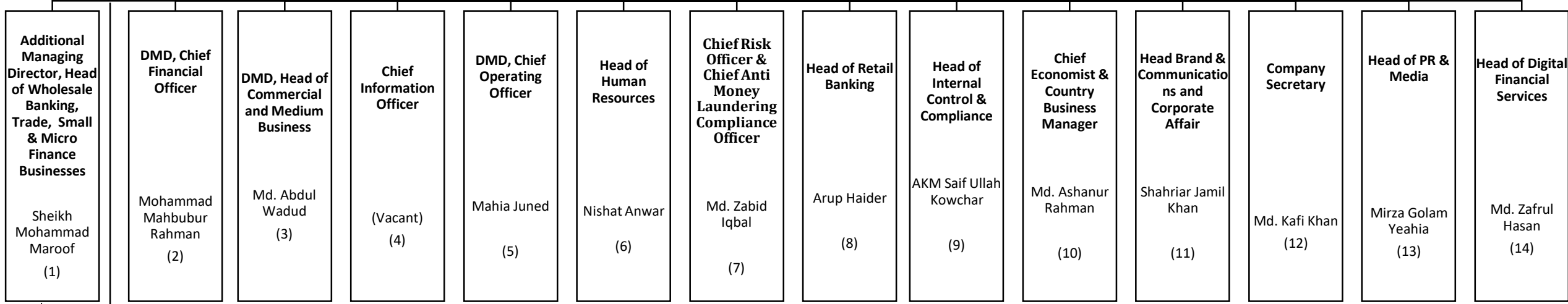


CBL Topline

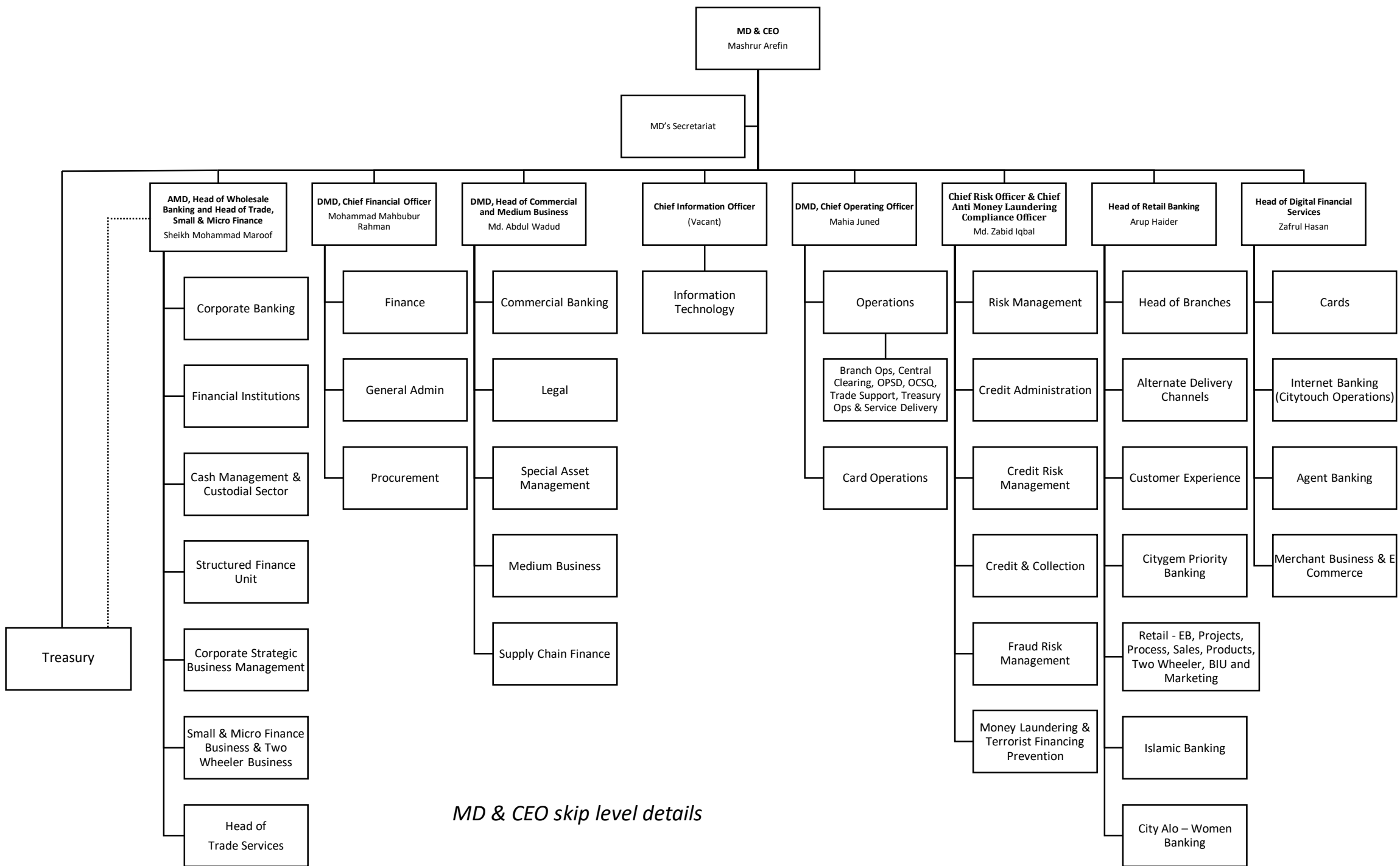
MD & CEO
Mashrur Arefin

MD's Secretariat



Head of Treasury
Muhammed Shah Alam
(15)

- Note:**
- (7) Chief Risk Officer will directly report to Board Risk Management (BRMC) and with a dotted reporting to MD & CEO. He will also perform as Head of Risk Management Division.**
 - (9) Head of ICCD will directly report to MD & CEO, However Head of Audit although being a part of ICC administratively, shall report directly to Audit Committee to the Board of Directors (ACB)**



MD & CEO skip level details