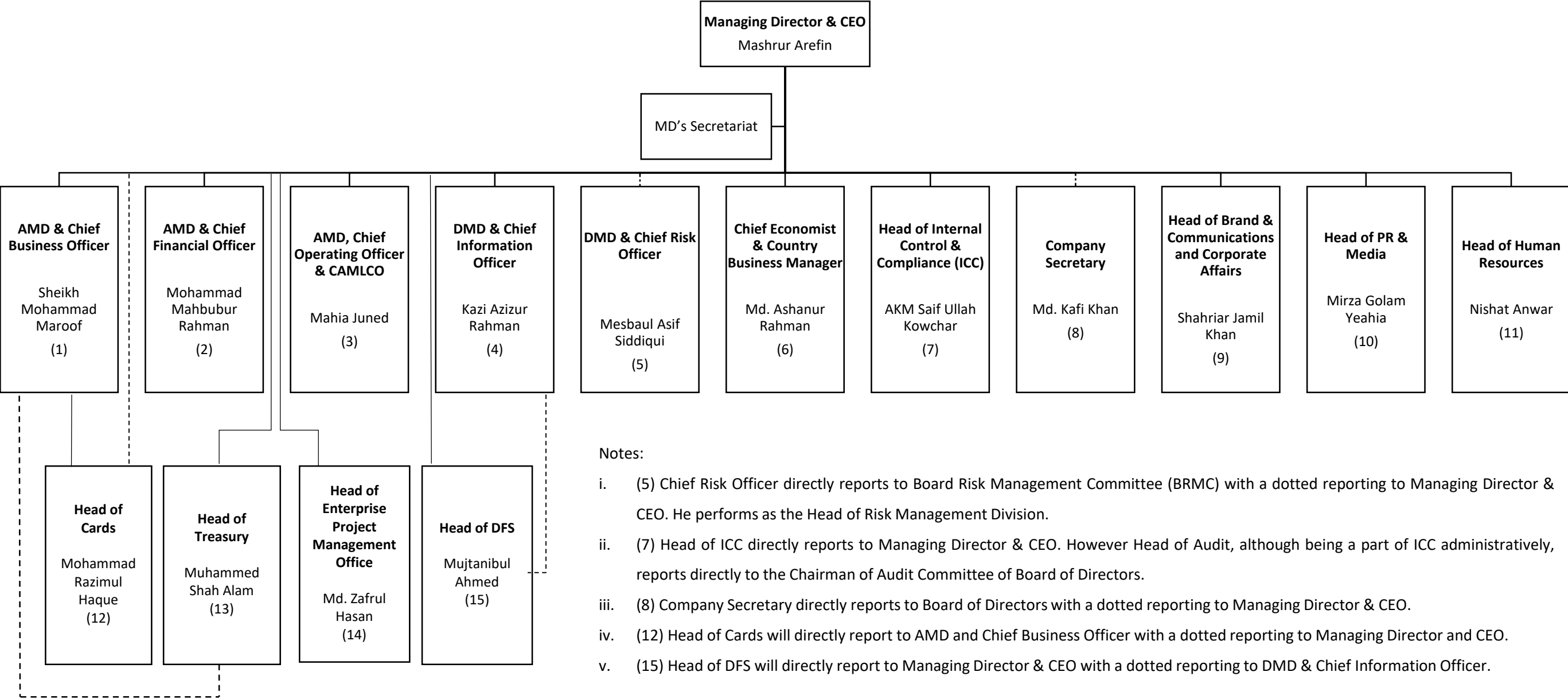


The City Bank Limited - Top Line

Direct Reports to Managing Director & CEO

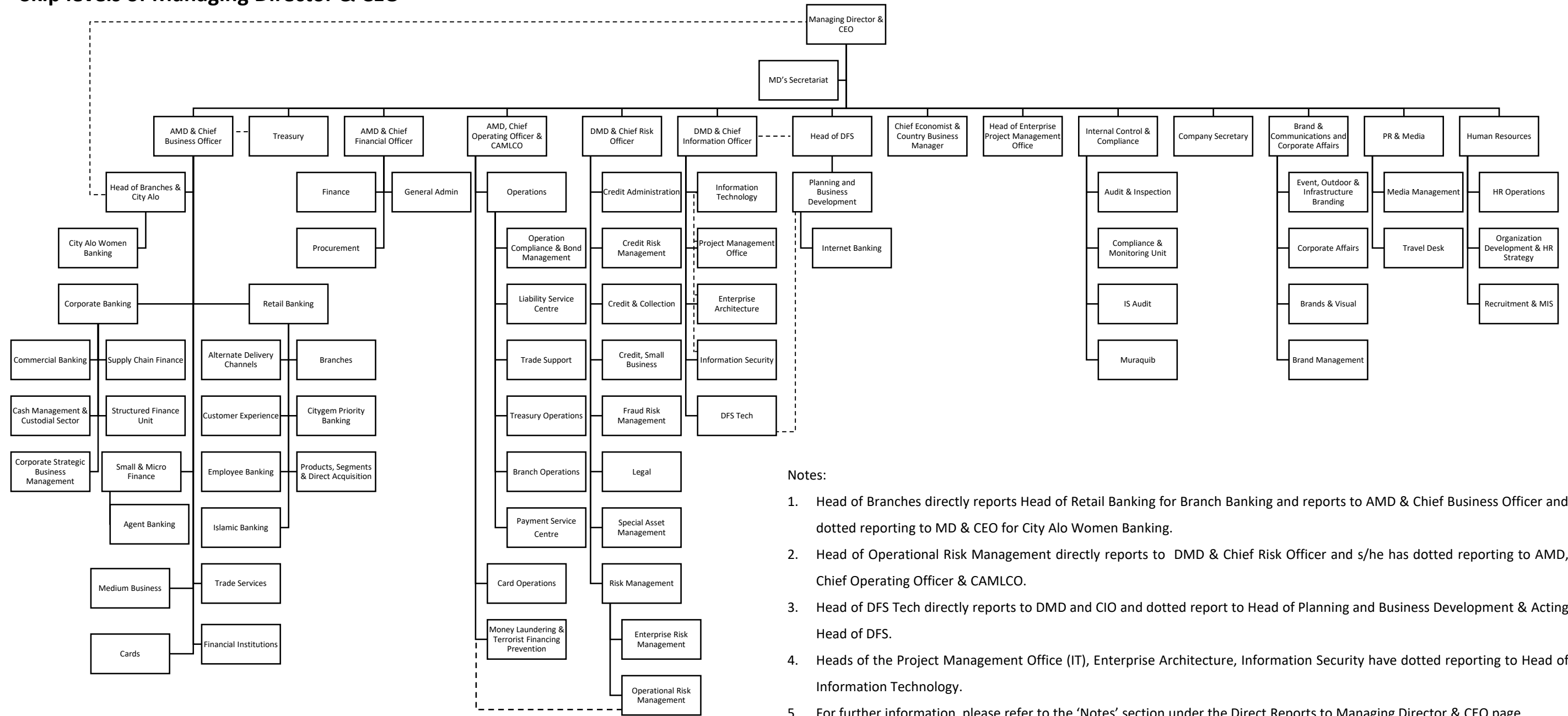


Notes:

- i. (5) Chief Risk Officer directly reports to Board Risk Management Committee (BRMC) with a dotted reporting to Managing Director & CEO. He performs as the Head of Risk Management Division.
- ii. (7) Head of ICC directly reports to Managing Director & CEO. However Head of Audit, although being a part of ICC administratively, reports directly to the Chairman of Audit Committee of Board of Directors.
- iii. (8) Company Secretary directly reports to Board of Directors with a dotted reporting to Managing Director & CEO.
- iv. (12) Head of Cards will directly report to AMD and Chief Business Officer with a dotted reporting to Managing Director and CEO.
- v. (15) Head of DFS will directly report to Managing Director & CEO with a dotted reporting to DMD & Chief Information Officer.

The City Bank Limited - Top Line (page 2 of 2)

Skip levels of Managing Director & CEO



Notes:

1. Head of Branches directly reports Head of Retail Banking for Branch Banking and reports to AMD & Chief Business Officer and dotted reporting to MD & CEO for City Alo Women Banking.
2. Head of Operational Risk Management directly reports to DMD & Chief Risk Officer and s/he has dotted reporting to AMD, Chief Operating Officer & CAMLCO.
3. Head of DFS Tech directly reports to DMD and CIO and dotted report to Head of Planning and Business Development & Acting Head of DFS.
4. Heads of the Project Management Office (IT), Enterprise Architecture, Information Security have dotted reporting to Head of Information Technology.
5. For further information, please refer to the 'Notes' section under the Direct Reports to Managing Director & CEO page.