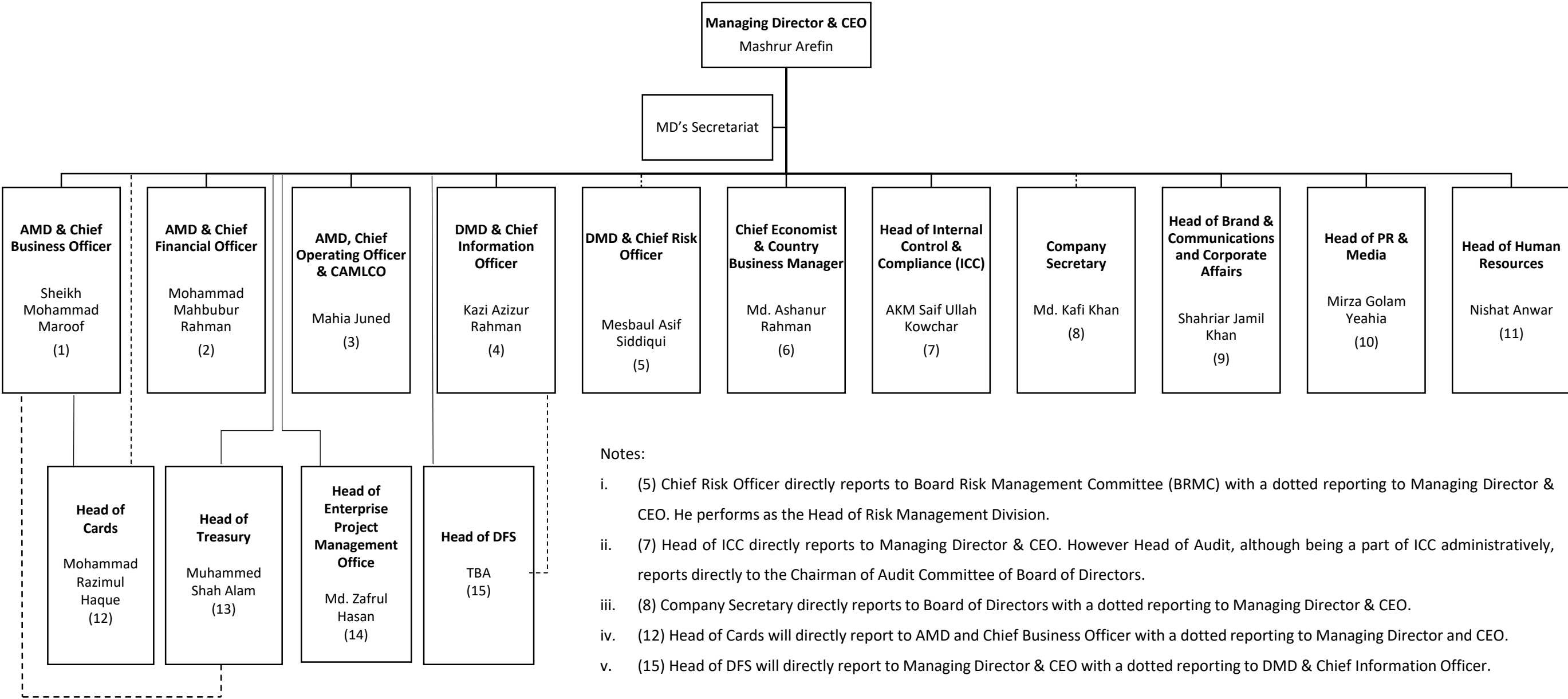


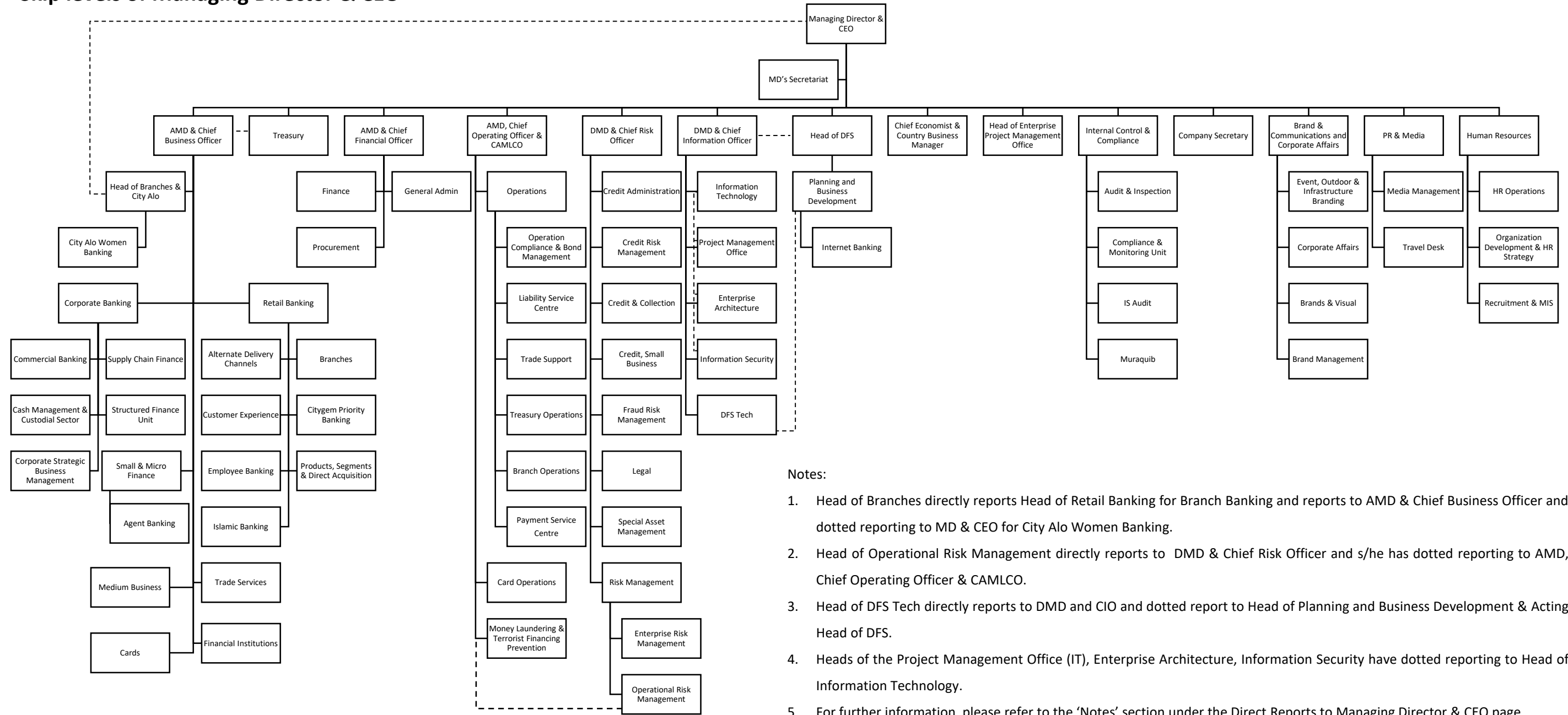
# The City Bank Limited - Top Line

## Direct Reports to Managing Director & CEO



# The City Bank Limited - Top Line (page 2 of 2)

## Skip levels of Managing Director & CEO



### Notes:

1. Head of Branches directly reports Head of Retail Banking for Branch Banking and reports to AMD & Chief Business Officer and dotted reporting to MD & CEO for City ALo Women Banking.
2. Head of Operational Risk Management directly reports to DMD & Chief Risk Officer and s/he has dotted reporting to AMD, Chief Operating Officer & CAMLCO.
3. Head of DFS Tech directly reports to DMD and CIO and dotted report to Head of Planning and Business Development & Acting Head of DFS.
4. Heads of the Project Management Office (IT), Enterprise Architecture, Information Security have dotted reporting to Head of Information Technology.
5. For further information, please refer to the 'Notes' section under the Direct Reports to Managing Director & CEO page.